



Rabbit anti Ephrin B3 Polyclonal Antibody

Alternative Name(s): Ephrin-B3; EFNB3

Order Information

- **Description:** Ephrin B3
- **Catalogue:** 500-11224
- **Lot:** See label
- **Size:** 100ug/200ul
- **Host:** Rabbit
- **Clone:** nan
- **Application:** IHC(P), WB
- **Reactivity:** Hu

ANTIGEN PREPARATION

Recombinant full length (1-340aa) human Ephrin-B34 protein expressed in E.coli.

BACKGROUND

Ephrins are the ligands which bind to the Eph receptor subfamily, the largest group of the receptor tyrosine kinase family. Both ephrins and Eph receptors are broadly expressed through the ectoderm, mesoderm, and endoderm of vertebrate embryos. Two classes of ephrins exist: Class A ephrins are tethered to the membrane by a GPI linkage and bind primarily to EphA receptors; Class B ephrins contain a membrane-spanning region and bind predominantly to EphB receptors.

PURIFICATION

The Rabbit IgG is purified by Epitope Affinity Purification

FORMULATION

This affinity purified antibody is supplied in sterile Phosphatebuffered saline (pH7.2) containing antibody stabilizer

SPECIFICITY

This antibody reacts with human Ephrin-B3. The other species are not tested.

STORAGE

The antibodies are stable for 24 months from date of receipt when stored at -20°C to -70°C. The antibodies can be stored at 2°C-8°C for three months without detectable loss of activity. Avoid repeated freezing-thawing cycles.

APPLICATIONS/SUGGESTED WORKING DILUTIONS*

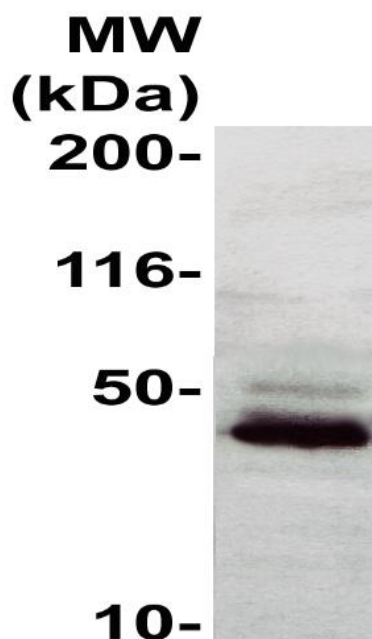
- Western Blot: 0.1-1 µg/ml
- ELISA: 0.01-0.1 µg/ml
- Immunoprecipitation: 2-5 µg/ml
- IHC: 2-10 µg/ml
- Flow cytometry: Not tested
- Molecular Weight: 36.0
- Positive Control: Kidney Tissue
- Cellular Location: Cell Membrane

*Optimal dilutions should be determined by researchers for the specific applications.

FOR RESEARCH USE ONLY.

AbboMax, Inc 2528 Qume Drive, Suite 8, San Jose, California 95131, USA
1 408-573-1898 (Tel). 1 408-573-1858 (Fax). www.abbomax.com info@abbomax.com

DATA ATTACHMENTS



Western Blot: The full length recombinant protein was immunoblotted by the Rabbit anti Ephrin-B3 (Cat# 500-11224) @ 1:500. An immunoreactive band around 35 kDa was observed.

REFERENCES

FOR RESEARCH USE ONLY.

AbboMax, Inc 2528 Qume Drive, Suite 8, San Jose, California 95131, USA
1 408-573-1898 (Tel). 1 408-573-1858 (Fax). www.abbomax.com info@abbomax.com